

The heavens declare the glory of God;
the skies proclaim the work of his hands.

Psalm 19:1

Addressing the Greatest Moral and
Religious Challenge of our Age:
Working Together in Fairfax

Faith Communities in Action

Eric Goplerud, Exec. Dir.

Faith Alliance for Climate Solutions

Today, we are seeing the fastest rates of human-induced climate change, environmental degradation and species extinction ever known...



It seems we have seen God's gift of creation care as a free pass to serve ourselves... whatever the consequences

Many of the world's poorest communities are already suffering the effects of climate change and environmental degradation through:

- increasingly unpredictable rainfall and extreme weather
- higher risk of infectious disease, especially malaria
- lower crop yields
- soil erosion
- land loss from sea-level rise
- flooding
- desertification
- famine
- reduced water supply
- and much more...



**This is a situation of
INJUSTICE too...**

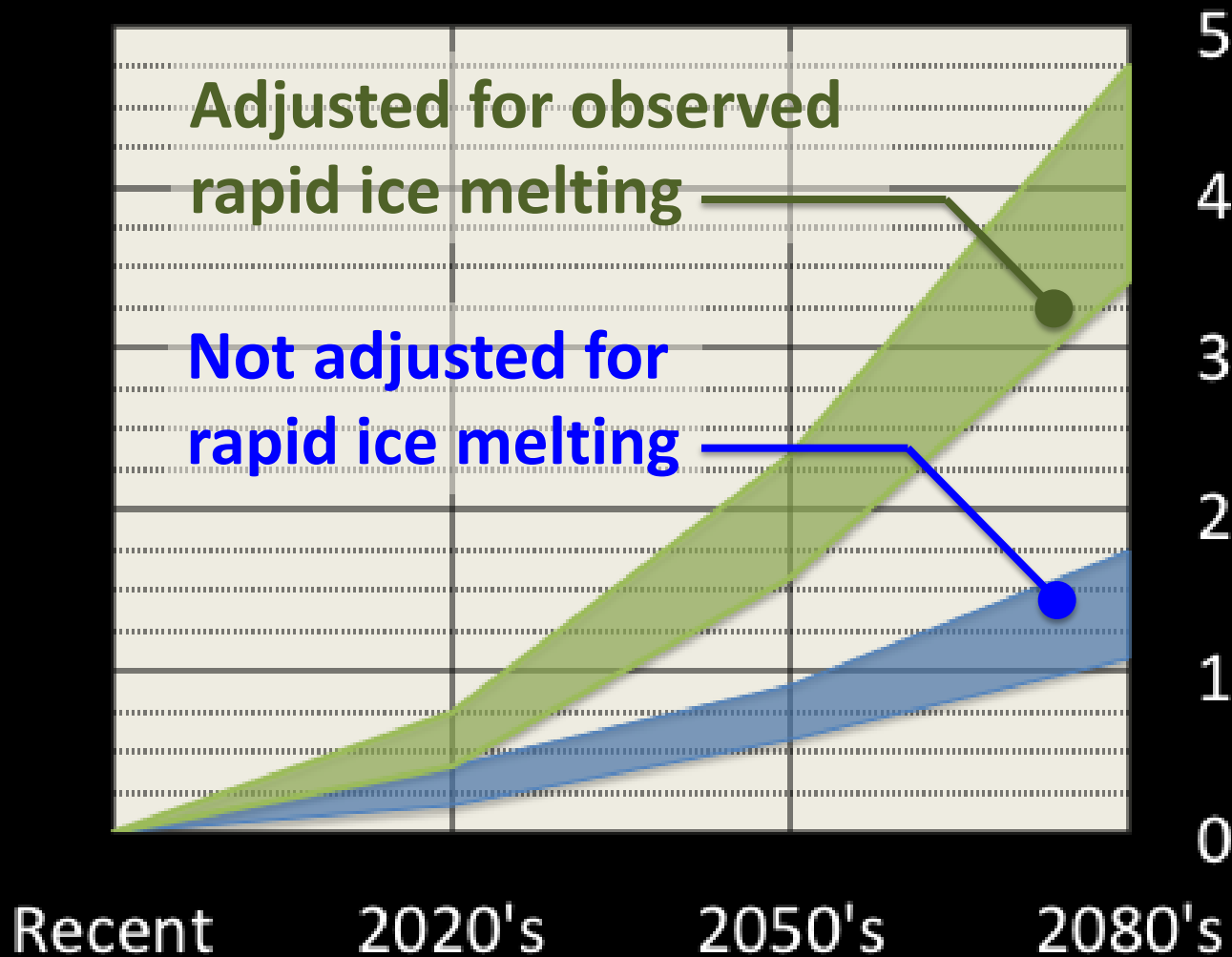
An aerial photograph of the Washington DC metropolitan area, showing the Potomac River, the White House, the US Capitol, and the Washington Monument. The city is densely packed with buildings and green spaces.

What is projected for the Washington DC metropolitan area?

From: "A Climate Conversation" Introduction to Climate Science Webinar (18 Feb 2014), Part of the "Building a Climate Resilient National Capital Region" workshops organized by the National Capital Planning Commission, General Services Administration, National Aeronautics and Space Administration, Metropolitan Washington Council of Governments, and the United States Environmental Protection Agency.

What is projected locally?

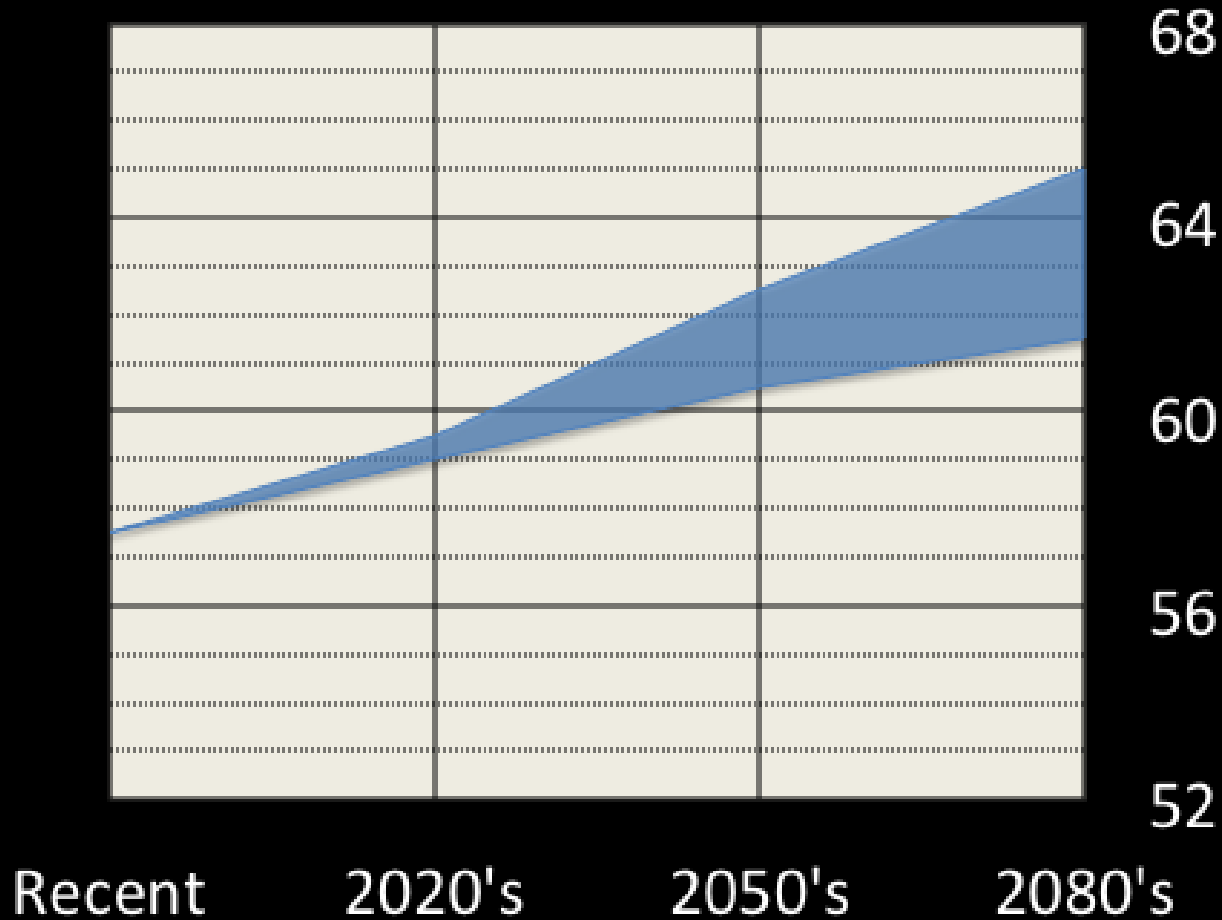
Average Sea Level (feet)



Sea level rise is projected to accelerate this century

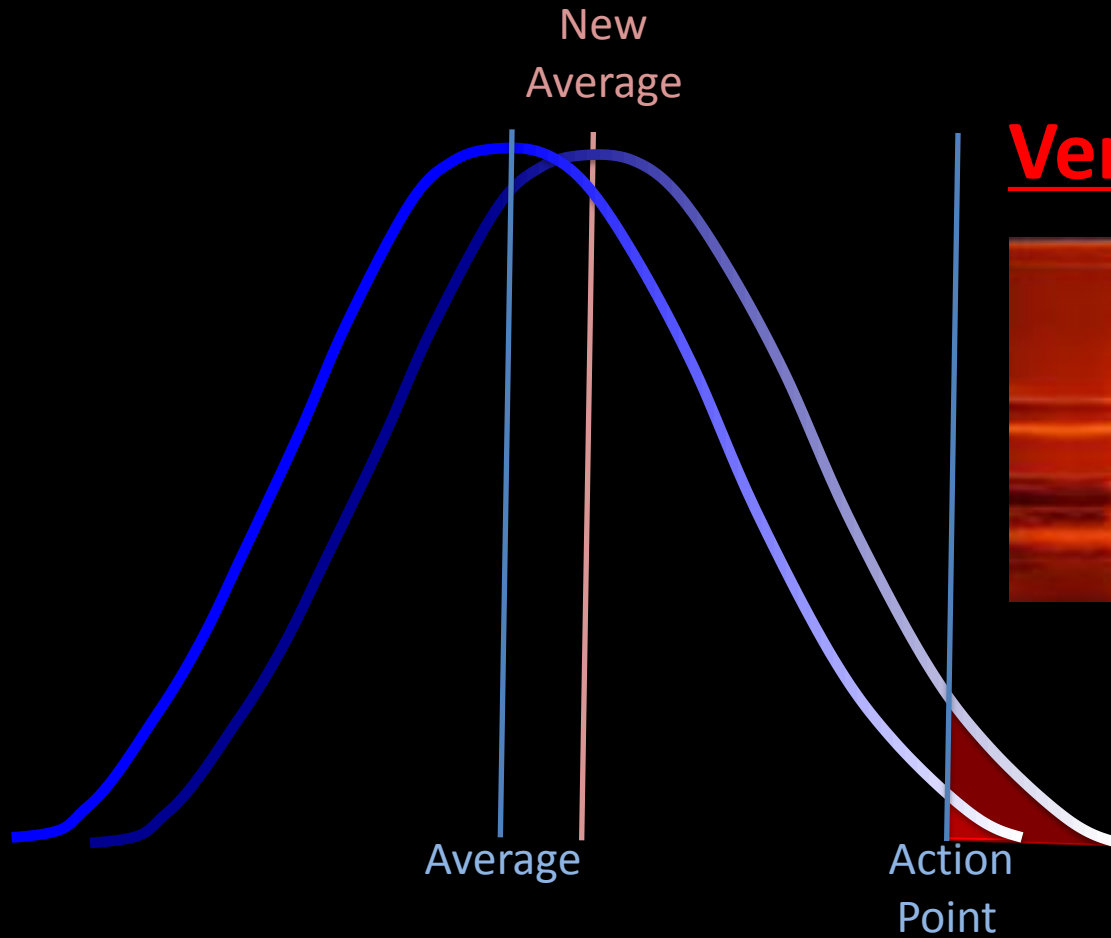
What is projected locally?

Average Annual Temperature (°F)



Average temperatures are projected to rise

What can a few degrees warmer do?



Very Likely Increase:

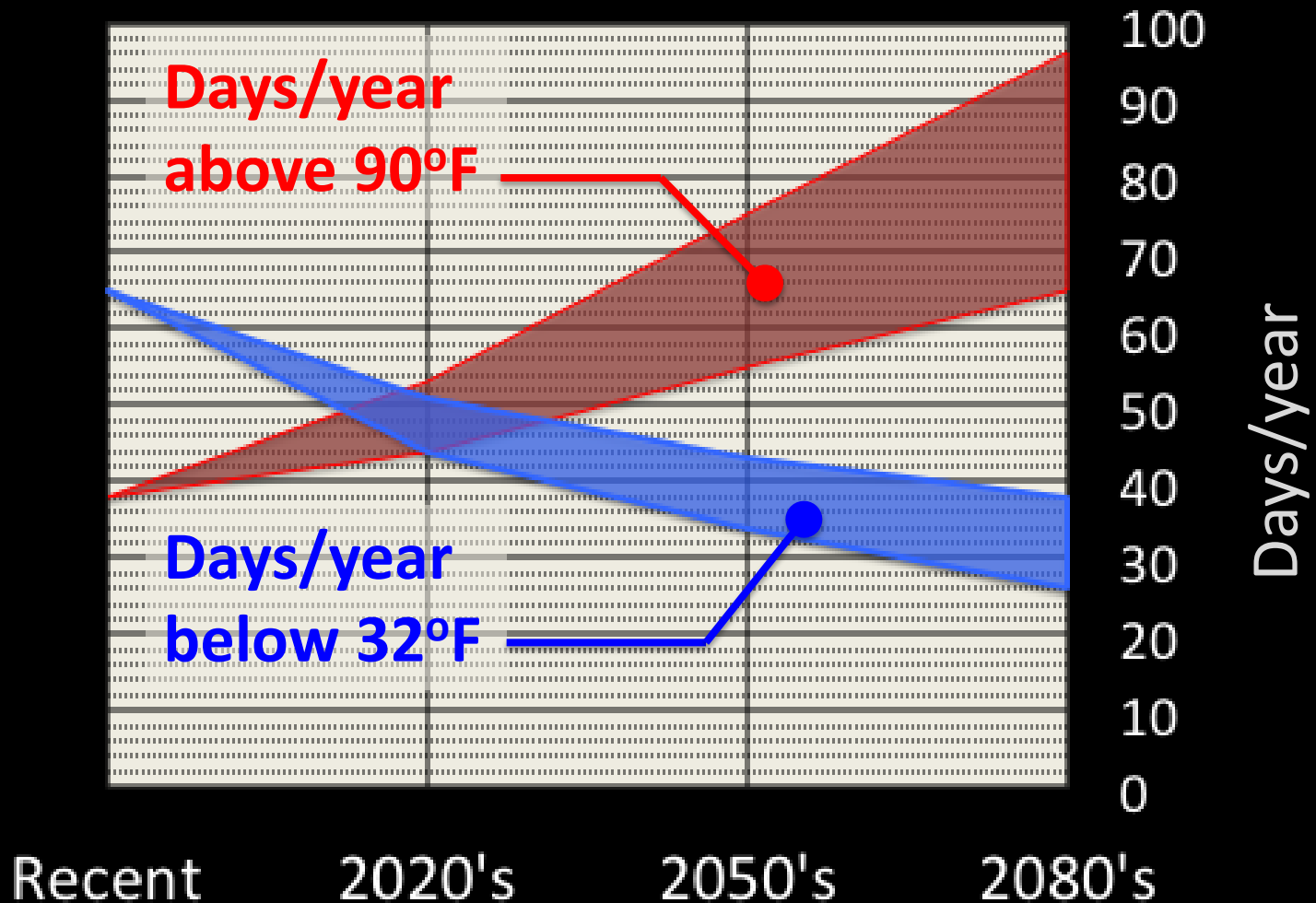


**Extremely
warm
days**

A small average change can mean a big effect on extremes

What can a few degrees warmer do?

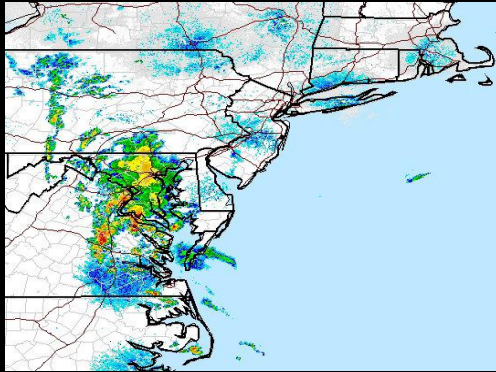
Extreme Temperature Events



Extremes can change much faster than averages.

What other changes are projected?

Likely Increase



Intense
rainfall
events

Likely Decrease



Snowfall
frequency
& amount

More likely than not

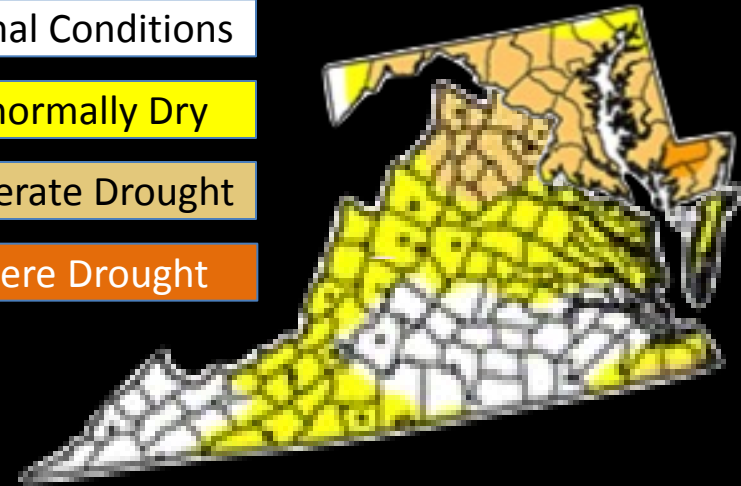
Increases in
drought events

Normal Conditions

Abnormally Dry

Moderate Drought

Severe Drought



There's more to consider than averages

The Most Immediate Climate-Related Threats to Public Health in this Region



- Air quality
- Extreme heat
- Floods, droughts, and extreme weather events
- Vector borne diseases
- Food borne illness
- Sea level rise
- Contaminated drinking water
- Malnourishment & food insecurity

The Most At-Risk Populations

- Young children
- Elderly 65 years old and older
- Elderly people that live alone
- Communities already stressed by environmental justice and health factors
- Socially isolated persons
- Chronically ill people or people with respiratory diseases
- Persons living in low-lying land areas
- Persons that have a low socioeconomic status

Natural Systems Impacts

EXAMPLES:

- Inundation of wetlands and low-lying areas.
- Native species may be forced out of the area.
- Dead zones in the Chesapeake Bay will likely increase.
- Establishment of invasive populations of species.
- Degraded water quality in coastal bays due to increases in winter-spring runoff.
- Increased length of the growing season early in century.
- Milk and poultry production negatively impacted by heat stress later in the century.
- Increased forest vulnerability to drought, insect pests, and forest fires.

*"The ultimate test
of a moral society
is the kind of
world that it
leaves to its
children."*

Dietrich Bonhoeffer, German theologian



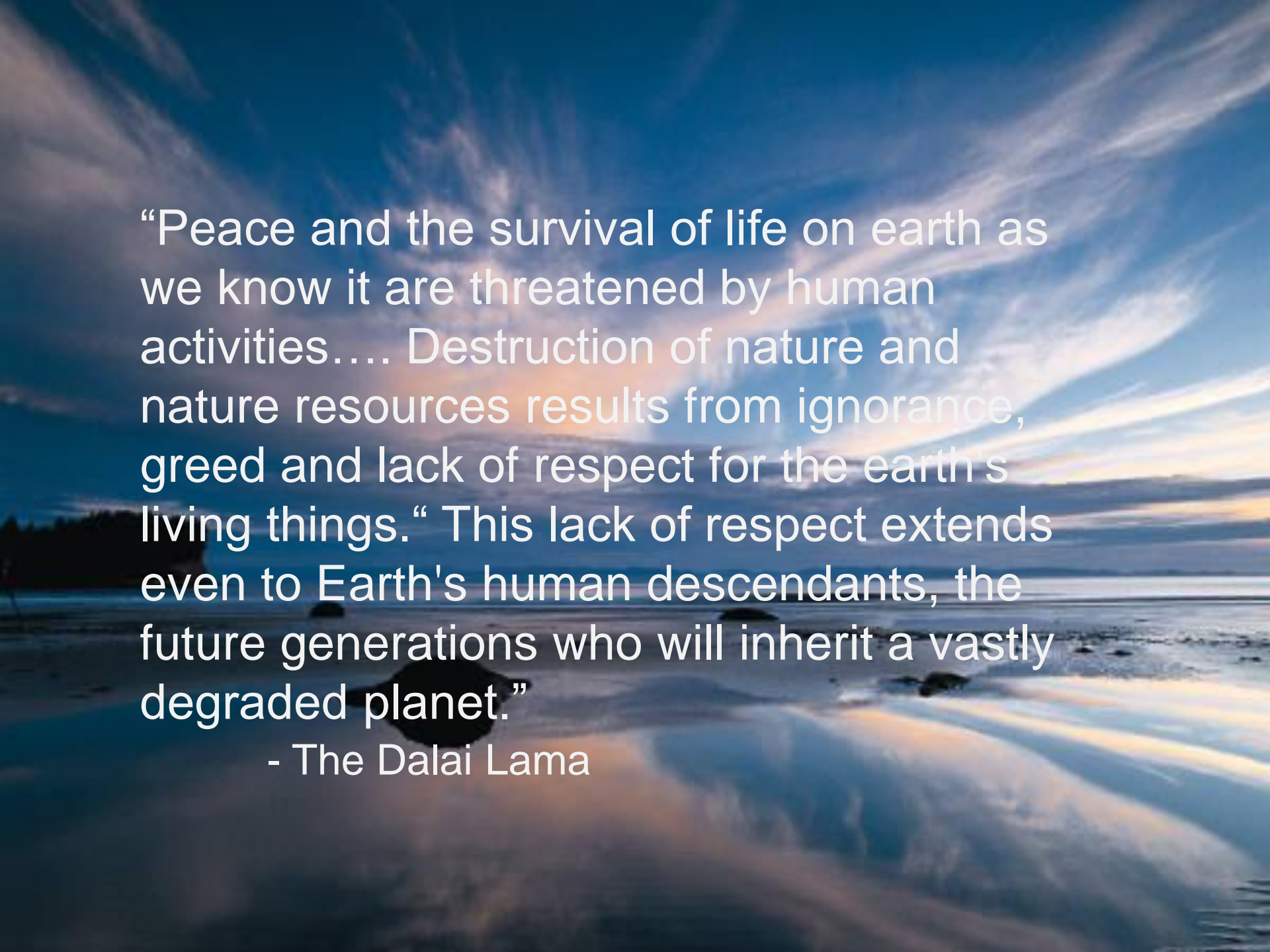
Climate Change calls us to ask who is my neighbor?

- **You shall love your neighbor as yourself.
(Judaism from Leviticus 19:18)**
- **This is the sum of duty: do not do to others
what would cause pain if done to you.
(Hinduism from Mahabharata 5:1517)**
- **Hurt not others in ways that you yourself
would find hurtful." (Buddhism from Udana-
Varga 5:18)**

Climate Change calls us to care for the Creation?

The All-Merciful...created humans and ... set (the earth on) balance. Transgress not in the balance, and weigh with justice, and skimp not in the balance. And earth - He set it down for all beings, therein fruits and palm trees with sheaths, and grain in the blade, and fragrant herbs.

- The Quaran 55: 1-12

A scenic landscape of a beach at sunset or sunrise. The sky is a mix of deep blue and orange, with wispy clouds. The water in the foreground is calm, reflecting the colors of the sky. The beach is visible in the middle ground, with some rocks scattered along the shore.

“Peace and the survival of life on earth as we know it are threatened by human activities.... Destruction of nature and nature resources results from ignorance, greed and lack of respect for the earth's living things.” This lack of respect extends even to Earth's human descendants, the future generations who will inherit a vastly degraded planet.”

- The Dalai Lama

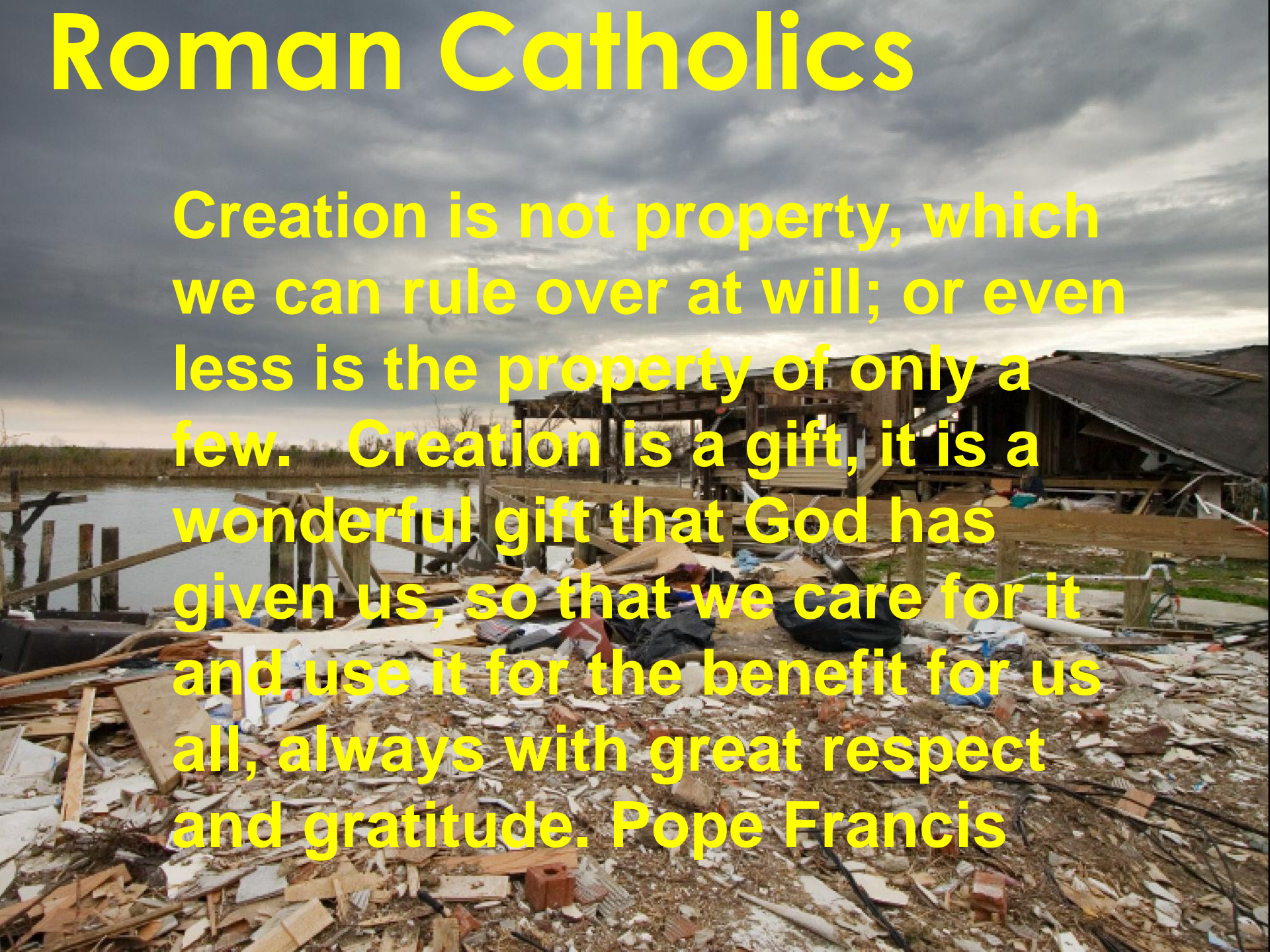
[Evangelical Environmental Network](#), We believe that creation care is truly a matter of life and that pollution harms the vulnerable, especially children and the unborn. We believe the body of Christ should be an example by their work and integrity of what God's people can do in the world to solve some of the great challenges of our time.

**God made creation good.
Human sin polluted the Earth.
In Christ, there is hope to make it
right.**

EVANGELICAL CHRISTIANS

Roman Catholics

Creation is not property, which we can rule over at will; or even less is the property of only a few. Creation is a gift, it is a wonderful gift that God has given us, so that we care for it and use it for the benefit for us all, always with great respect and gratitude. Pope Francis





Faith Alliance for Climate Solutions

We are a growing faith alliance in Fairfax County, Virginia, working in partnership with Interfaith Power & Light (DC.MD.NoVa), organized for climate change solutions. We see this as a moral, spiritual responsibility to protect future generations.

Fairfax leads in many areas. We can also lead in common-sense climate solutions that save taxpayer dollars and protect our quality of life.

www.faithforclimate.org

Faith Alliance for Climate Solutions Community Council

Dr. Sultan Ahmed, All Dulles Area Muslim Society (ADAMS)

Aisha Bigbee, Alfred Street Baptist Church

Erik Backus, Hope Lutheran Church, Annandale

John Cartmill, Reston Bible Church

Joe Cohen, Temple Rodef Shalom

Brian Christoffersen, Christ Crossman United Methodist Church

Nitin Dogra, Hindu American Seva Communities

Rev. Dr. Jerrold Foltz, Wellspring United Church of Christ

Robert Faithful IV, St. John's Episcopal Church

Executive Director Eric Goplerud, Unitarian Universalist Congregation of Fairfax

Deacon David Kepley, Providence Presbyterian Church

Jeff W. Johnson, Unity Church of Fairfax

Scott Peterson, Unitarian Universalist Congregation of Fairfax

In partnership with Interfaith Power and Light, Joelle Novey



*Faith Alliance
for Climate Solutions*

3/14 Judge @310KANKADONHARTK / judge@kstar.com



"IF BEING COLD MEANS THERE'S NO SUCH THING AS GLOBAL WARMING,
DOES BEING FULL MEAN THERE'S NO SUCH THING AS WORLD HUNGER?"



CLIMATE SUMMIT

WHAT IF IT'S
A BIG HOAX AND
WE CREATE A BETTER
WORLD FOR NOTHING?

- ENERGY INDEPENDENCE
- PRESERVE RAINFORESTS
- SUSTAINABILITY
- GREEN JOBS
- LIVABLE CITIES
- RENEWABLES
- CLEAN WATER, AIR
- HEALTHY CHILDREN
- ETC. ETC.



11/19 USA TODAY
YEV PITT